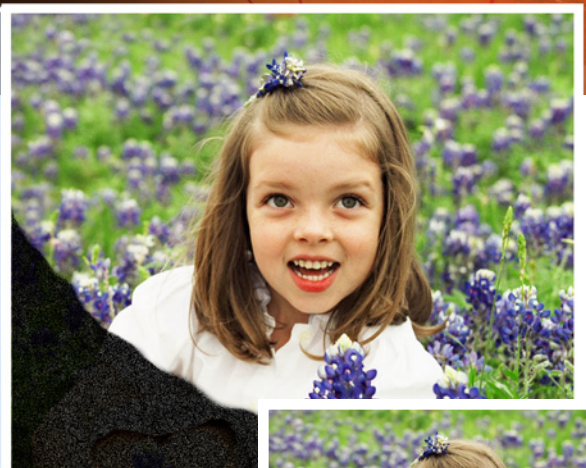
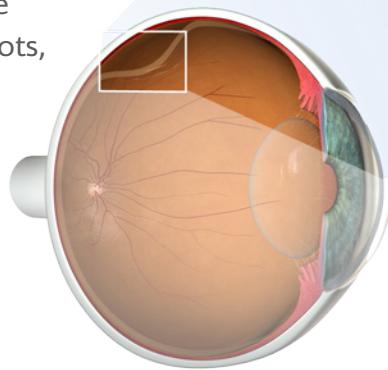


Retinal Detachment

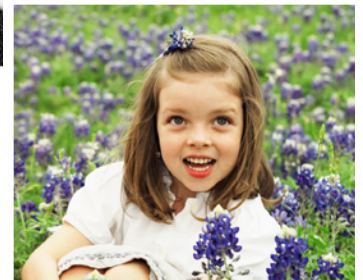
The retina is a multi-layered structure lining the back of the eye that works much like the film in a camera. If the retina's layers separate, it is called a retinal detachment. Detached areas of retina cannot send visual signals to the brain properly, resulting in decreased vision.

Symptoms

The most common symptoms of retinal detachment include seeing multiple light flashes or multiple floating spots, blurry vision, or a veil-like blockage of a portion of vision. These symptoms usually occur rather suddenly, but can also develop more slowly.



Simulated vision with a retinal detachment



Normal vision

Treatment

Left untreated, retinal detachment can cause serious and permanent vision damage. Symptoms of retinal detachment should be considered an eye emergency, requiring immediate attention. The goal of treatment is to preserve or restore vision by reattaching the retina and eye surgeons use a variety of techniques. Holes in the retina through which fluid is seeping under the retina can be sealed with laser light treatment. "Pneumatic Retinopexy," involves injection of a gas bubble into the eye to push the retina back into position. "Scleral Buckling" makes use of a plastic band placed around the eye which pushes the wall of the eye back in contact with the detached retina. "Vitrectomy" removes the jelly-like material inside the eye, called vitreous, when it is aggravating a detachment by tugging on the retina. Prompt treatment increases the chance of reattaching the retina successfully and improving vision.